



LEGACY®

High Efficiency Rigid Cell, Extended Surface Filters
4" (MERV 11 & 14) and 12" Depths (MERV 11 & 15)

LEGACY® 4" and 12" High Efficiency Rigid Cell Extended Surface Filter.

The AIRGUARD LEGACY high efficiency filter may qualify as a sustainable component for LEED/Green Building Initiative. The LEGACY is a MERV 15 (Standard 52.2 Minimum Efficiency Reporting Value) product with extremely low initial resistance characteristics. MERV 15 is hospital compliant for full patient care. The LEGACY will help you increase your overall filter efficiency, to exceed LEED requirements of MERV 13, while maintaining, or lowering, your energy costs.

For more information regarding the LEGACY from AIRGUARD, please contact your nearest AIRGUARD Stocking Distributor, local AIRGUARD Territory Manager or a Customer Care Associate at 1-866-247-482. You can also click the Distributor Locator Button at www.airguard.com.



Patent #6,685,833

4" offered in MERV 11 & 14 and 12" offered in MERV 11 & 15



12" with Single Header

4" with Single Header

Unique Channel Flow Molded Media:

- 4" is MERV 11 & 14 and 12" is MERV 11 & 15
- Very Low Resistance Reduces Energy Consumption; Lowers Energy Costs
- High Dust Holding Capacity
- Light Weight all Plastic Construction
- Class 1 per U.L. Standard 900
- May qualify as a sustainable component for a LEED/Green Building Initiative

LEGACY

High Efficiency Extended Surface Filters with
Channel Flow Molded Media

4" Deep Filters - MERV 11 & 14

For use where space is limited. 4" deep LEGACY filters operate at 500 FPM at substantially lower resistance than competitive 4" - 6" deep filters.

12" Deep Filters - MERV 11 & 15 Single Header Construction

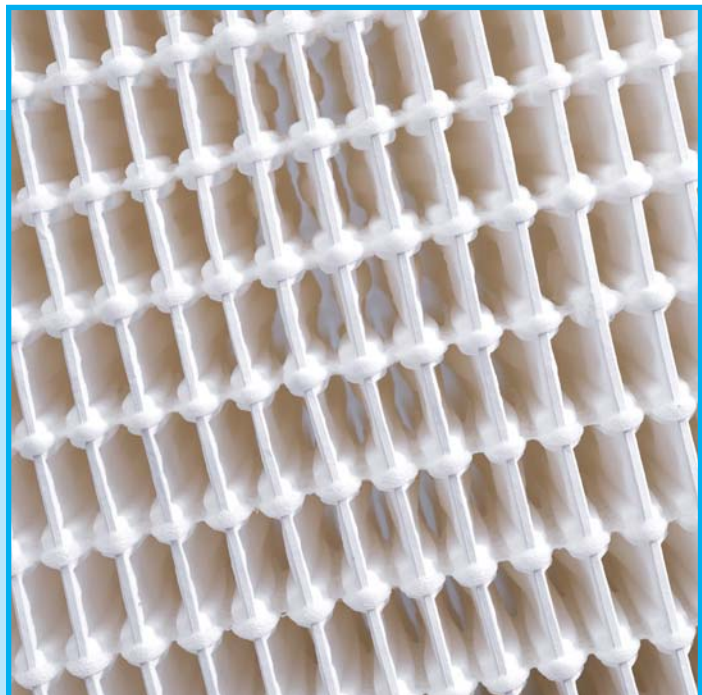
LEGACY filters replace traditional 12" deep rigid cell filters operating at 500 - 625 FPM with substantially lower resistance.



Unique Channel-Flow Molded Media Produces Lowest Resistance

LEGACY media is molded into a series of preformed channels that direct the air smoothly through the filter. This unique process results in the lowest resistance of any high efficiency filter on the market. Low resistance maximizes energy savings.

LEGACY Close up view shows how beads of adhesive applied to the media hold the channels open to permit free flow of air for low resistance and complete use of the media.



*High Efficiency, Low Resistance,
Rigid Cell Construction Designed for
Difficult Operating Conditions*

Reverse Flow Installation For Front Load Applications (12" Deep Filters)

For front load installations, or where there is no down stream access, 12" deep LEGACY filters are available in a reverse flow model.

Glue Bead Adhesive Strips Stabilize Pleat Pack

Beads of adhesive applied to the media bond the pleats into a totally rigid, solid pack. The pleats hold their shape and the molded channels are held open for free flow of air in all types of operating conditions. No pleat deformation, no blocking off.

Rigid Cell Design Handles Difficult Operating Conditions

Rigid cell design, all plastic components and 100% synthetic media make LEGACY filters ideal for the most demanding operating conditions, including variable air volume systems, high air flow, turbulence, repeated fan shut down, high moisture, and some chemical or corrosive conditions. These filters are designed for tough installations.

Full Media Exposure Produces High Dust Holding Capacity

The Channel-Flow molded media design not only produces low resistance, it also allows the media to be completely exposed to dirt laden air. Dirt loads evenly over every square foot of filter surface area for maximum dust holding capacity and long service life.

All Plastic Construction – Completely Incinerable, Light Weight

The cell sides are made of high strength, high impact polystyrene plastic. They are moisture, chemical and corrosion resistant. LEGACY filters contain no metal components – no rust, no corrosion. The elimination of metal also makes these filters completely incinerable and light weight.



Spring latches are used to secure the 12" Reverse Flow LEGACY filter to the holding frame.



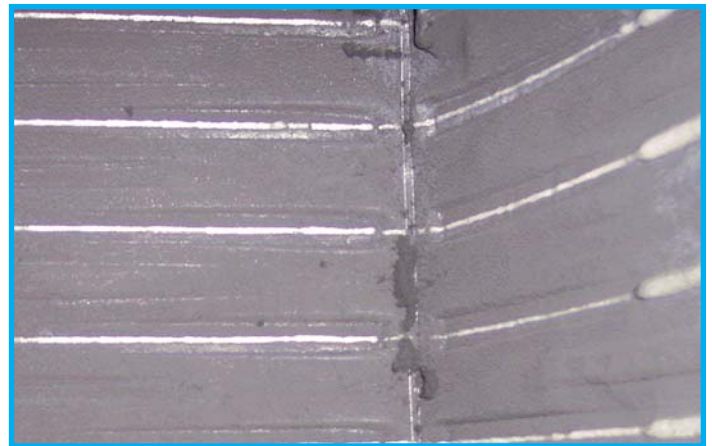
2" & 4" Pre-filter clips hold the prefilter to the Reverse Flow LEGACY filter.



Various sized metal frames are available to make the LEGACY suitable for most any application.

100% Synthetic Media

LEGACY filters are made with 100% synthetic media. It is extremely durable, resists tearing, abrasion and is highly damage resistant. No more media damage during shipping, handling or installation. LEGACY media is also unaffected by exposure to moisture and some chemicals. This media is just plain tough.



See how the preformed channels allow dirt to be collected all the way to the back of the pleats. Every square foot of media is fully utilized for maximum dust capacity.

LEGACY®

High Efficiency Extended Surface Filters
with Channel Flow Molded Media



Model Number	Nominal Size (HxWxD) Inches	Actual Size (HxWxD) Inches	Rated Air Flow Capacity (CFM)	Initial Resistance (In. W. G.) @Rated Air Flow MERV 14,15	Initial Resistance (In. W. G.) @Rated Air Flow MERV 11	Recommended Final Resistance (In. W. G.)
12" Packs - Single Header						
LG-604	24x24x12	23 $\frac{3}{8}$ x 23 $\frac{3}{8}$ x 11 $\frac{1}{2}$	2000	-	.26"	1.5"
LG-615	20x24x12	19 $\frac{3}{8}$ x 23 $\frac{3}{8}$ x 11 $\frac{1}{2}$	1650	-	.26"	1.5"
LG-613	20x20x12	19 $\frac{3}{8}$ x 19 $\frac{3}{8}$ x 11 $\frac{1}{2}$	1400	-	.26"	1.5"
LG-603	12x24x12	11 $\frac{3}{8}$ x 23 $\frac{3}{8}$ x 11 $\frac{1}{2}$	1000	-	.26"	1.5"
LG-904	24x24x12	23 $\frac{3}{8}$ x 23 $\frac{3}{8}$ x 11 $\frac{1}{2}$	2000	.34"	-	1.5"
LG-915	20x24x12	19 $\frac{3}{8}$ x 23 $\frac{3}{8}$ x 11 $\frac{1}{2}$	1650	.34"	-	1.5"
LG-913	20x20x12	19 $\frac{3}{8}$ x 19 $\frac{3}{8}$ x 11 $\frac{1}{2}$	1400	.34"	-	1.5"
LG-903	12x24x12	11 $\frac{3}{8}$ x 23 $\frac{3}{8}$ x 11 $\frac{1}{2}$	1000	.34"	-	1.5"
4" Packs						
LG4-604	24x24x4	23 $\frac{3}{8}$ x 23 $\frac{3}{8}$ x 3 $\frac{3}{4}$	2000	-	.23"	1.5"
LG4-612	20x25x4*	19 $\frac{3}{8}$ x 24 $\frac{3}{8}$ x 3 $\frac{3}{4}$	1750	-	.23"	1.5"
LG4-615	20x24x4	19 $\frac{3}{8}$ x 23 $\frac{3}{8}$ x 3 $\frac{3}{4}$	1650	-	.23"	1.5"
LG4-613	20x20x4	19 $\frac{3}{8}$ x 19 $\frac{3}{8}$ x 3 $\frac{3}{4}$	1400	-	.23"	1.5"
LG4-610	16x25x4*	15 $\frac{3}{8}$ x 24 $\frac{3}{8}$ x 3 $\frac{3}{4}$	1400	-	.23"	1.5"
LG4-609	16x20x4	15 $\frac{3}{8}$ x 19 $\frac{3}{8}$ x 3 $\frac{3}{4}$	1100	-	.23"	1.5"
LG4-603	12x24x4	11 $\frac{3}{8}$ x 23 $\frac{3}{8}$ x 3 $\frac{3}{4}$	1100	-	.23"	1.5"
LG4-904	24x24x4	23 $\frac{3}{8}$ x 23 $\frac{3}{8}$ x 3 $\frac{3}{4}$	2000	.43"	-	1.5"
LG4-912	20x25x4*	19 $\frac{3}{8}$ x 24 $\frac{3}{8}$ x 3 $\frac{3}{4}$	1750	.43"	-	1.5"
LG4-915	20x24x4	19 $\frac{3}{8}$ x 23 $\frac{3}{8}$ x 3 $\frac{3}{4}$	1650	.43"	-	1.5"
LG4-913	20x20x4	19 $\frac{3}{8}$ x 19 $\frac{3}{8}$ x 3 $\frac{3}{4}$	1400	.43"	-	1.5"
LG4-910	16x25x4*	15 $\frac{3}{8}$ x 24 $\frac{3}{8}$ x 3 $\frac{3}{4}$	1400	.43"	-	1.5"
LG4-909	16x20x4	15 $\frac{3}{8}$ x 19 $\frac{3}{8}$ x 3 $\frac{3}{4}$	1100	.43"	-	1.5"
LG4-903	12x24x4	11 $\frac{3}{8}$ x 23 $\frac{3}{8}$ x 3 $\frac{3}{4}$	1100	.43"	-	1.5"
4" Packs - Single Header						
LG4-903-PH	12x24x4	11 $\frac{3}{8}$ x 23 $\frac{3}{8}$ x 3 $\frac{3}{4}$	1100	.48"	-	1.5"
LG4-913-PH	20x20x4	19 $\frac{3}{8}$ x 19 $\frac{3}{8}$ x 3 $\frac{3}{4}$	1400	.48"	-	1.5"
LG4-915-PH	20x24x4	19 $\frac{3}{8}$ x 23 $\frac{3}{8}$ x 3 $\frac{3}{4}$	1650	.48"	-	1.5"
LG4-904-PH	24x24x4	23 $\frac{3}{8}$ x 23 $\frac{3}{8}$ x 3 $\frac{3}{4}$	2000	.48"	-	1.5"
LG4-603-PH	12x24x4	11 $\frac{3}{8}$ x 23 $\frac{3}{8}$ x 3 $\frac{3}{4}$	1100	-	.27"	1.5"
LG4-613-PH	20x20x4	19 $\frac{3}{8}$ x 19 $\frac{3}{8}$ x 3 $\frac{3}{4}$	1400	-	.27"	1.5"
LG4-615-PH	20x24x4	19 $\frac{3}{8}$ x 23 $\frac{3}{8}$ x 3 $\frac{3}{4}$	1650	-	.27"	1.5"
LG4-604-PH	24x24x4	23 $\frac{3}{8}$ x 23 $\frac{3}{8}$ x 3 $\frac{3}{4}$	2000	-	.27"	1.5"

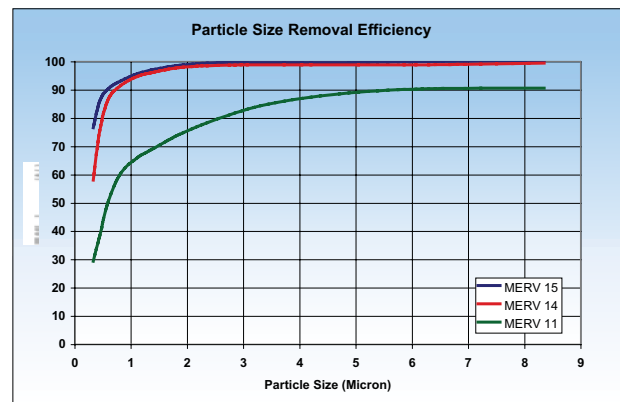
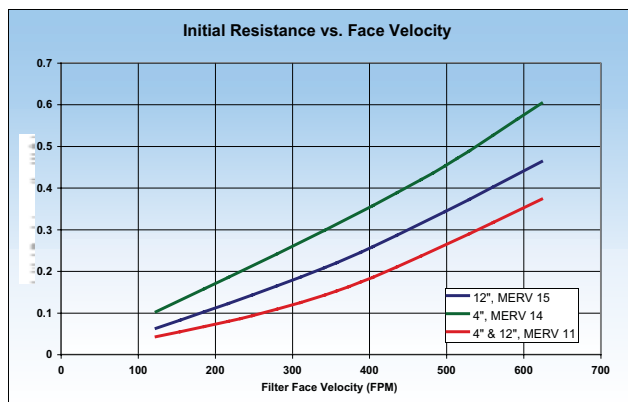
IMPORTANT NOTES:

- All performance data is based on the ASHRAE 52.2-2007 Test Standard. Based on a test velocity of 492 FPM for 24x24 face size.
- Width and height dimensions are interchangeable. LEGACY filters can be installed with the pleats vertical or horizontal.
- Continuous Operating Temperature: 140°F (60°C).

Underwriters Laboratories Inc. Classification:
LEGACY filters are classified Class 1 per U.L. Standard 900.
Energy Savings Calculator available online at www.airguard.com

LEED (*Leadership in Energy and Environment Design*) addresses all building types and emphasizes state-of-the-art strategies in five areas: sustainable site development, water savings, energy efficiency, materials and resources selection, and indoor environmental quality. For more information please visit: www.usgbc.org

* Reverse size pleat on 25" height product.



A-LEG-1009



www.airguard.com



CLARCOR Air Filtration Products
100 River Ridge Circle • Jeffersonville, IN 47130
Customer Care Team: 1-866-247-4827 • Fax: 1-800-784-3458
Email: mailbag@airguard.com • www.airguard.com

Distributed by:

© 2009 CLARCOR Air Filtration Products. CLARCOR Air Filtration Products has a policy of continuous product research and development and reserves the right to change design and specifications without notice. Terms and Conditions of Sale can be accessed in the "LOGIN" section at www.airguard.com