



Manometers and Air Filter Gages

Operating Range

Airguard Air Flow Manometers are of the inclined-vertical type. Large diameter curved tube gage provides wide, more easily read, increments at low readings. They are excellent for general purpose work, including measurement of pressure both above and below atmospheric, pressure differentials and air velocities (with pitot tube).

Construction

Construction is simple with practically indestructible molded white styrene-acrylonitrile housing, indicating tube and fluid wells, molded ABS knobs and zero adjust plunger, shock mounted glass level vial and leak-proof "O" ring seals. Scales are lithograph printed on aluminum and epoxy coated. Front mounted zero adjust and fill plugs are provided for maximum convenience. Gage is suitable for use in ambient temperatures from - 20° to 150°F.

Quick, Easy Installation

Self-tapping screws secure unit to wood or metal surface - then, fill reservoir, adjust fluid level, connect fittings and tubing. Gage is operating.

Accessories

Comes with 8 feet of flexible double column plastic tubing, 2 connector fittings for 1/8" pipe or sheet metal ducts, 2 mounting screws, 3/4 oz. replacement fluid, red and green pointer flags and full installation instructions.

Diaphragm Actuated Direct Reading Dial Type Accurate ± 2% of Full Scale

MAGNEHELIC gage with molded plastic vent valves for easy zeroing. Available with adjustable signal flag (not shown; option "ASF" at extra cost) for immediate visual reference to maximum allowable pressure drop. External front screw for zero adjustment. Red and green scale overlays to highlight safe and dangerous readings are also available.



Standard Accessories Furnished

Standard gage mounting accessories furnished are two 1/8" SPT plugs for duplicate pressure tabs, two 1/8" pipe thread to rubber tubing adaptors, solid back mounting stud, hollow mounting stud, flush mounting adaptors.



MARK II

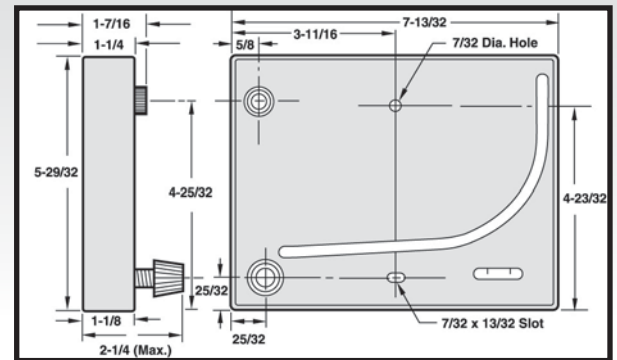
Model No. 25

Range: 0-3 inches W.G.

Fluid Requirements:

Uses .826 specific gravity red oil

DIMENSIONS



Air filter accessories furnished are mounting panel with necessary screws, two static pressure tips with integral compression fittings, two five foot lengths of 1/4" aluminum tubing and the two molded plastic vent valve and compression fittings also shown installed on the gage.



Features

- Easiest reading for personnel accustomed to dial type gages.
- Lowest cost pointer type gage.
- Easy zeroing with molded plastic vent valves.
- Sensitivity to 0.01" W.G.
- Withstands vibration
- Unaffected by over range pressure surges.

Model No.	Range	Minor Divisions
2000-0-AF	0-.5" W.G.	0.01"
2001-AF	0-1" W.G.	0.02"
2002-AF	0-2" W.G.	0.05"
2003-AF	0-3" W.G.	0.10"
2004-AF	0-4" W.G.	0.10"

Specifications

Weight of Gage: 1lb. 8 oz.

Finish: Case and aluminum parts iridite-dipped to withstand 168 hour salt spray test. Exterior finished in baked dark grey hammerloid.

Precision Machined, Solid Acrylic Plastic Gages

Accurate to $\pm 1\%$ of Full Scale

Gage Connections: 1/8" SPT high and low pressure taps, duplicated, one pair side and one pair back.

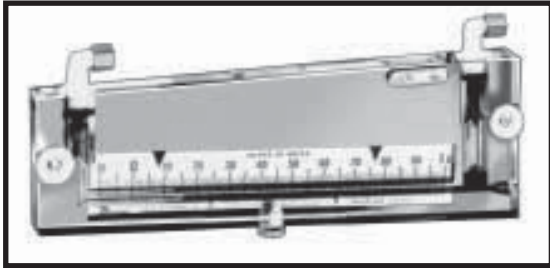
Gage Dimensions: Diameter of bezel, 4-3/4"
Diameter of body, 4-1/2"

Depth of body to bezel, 1-11/15"

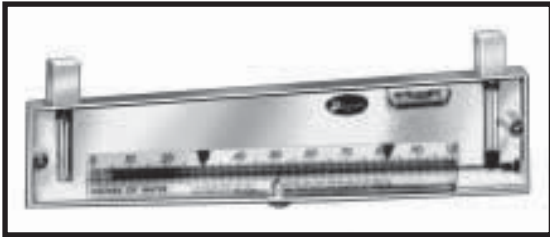
Accuracy: Plus or minus 2% full scale, throughout range at 70°F.

Maximum Total Pressure Rating: Sustained or highly repetitive pressure 15 psi.

Ambient Temperature Range: 30° to 140°F.



Model No. 250 5-AF



Model No. 451-AF

Features

Highly accurate and easy to use yet almost indestructible, Series 250-AF inclined Air Filter Gages are foolproof and dependable. There are no moving parts - no mechanical linkages - nothing to wear out, jam or deteriorate from vibration. They will never need calibration.

The mirror polished inclined scale allows operator to easily read minute differences in differential pressure across the filter accurately without parallax error.

The only servicing required is occasional zeroing. If cleaning is necessary, it is easily done with soap and water.



A-310-A (3 way angle valve) A-317 (plastic gage plug)

Construction

DURABLOCK® Series 250-AF Gages are precision machined 1" thick solid acrylic plastic, virtually unbreakable and free of distortion. The fluid bore is precision drilled to $\pm .0002$ " to assure life long accuracy. A glass spirit level is built into the body and encapsulated to prevent damage or tampering. The scale is mirror polished chrome plated brass to assure parallax free reading by alignment of the meniscus with its reflection. Safety traps are incorporated in the body to prevent loss of fluid due to pressure surges. Red and green signal flags indicate clearly when a filter change is necessary. Gages are suitable for use in ambient temperatures of -20°F to +150°F. Connection fittings are positively sealed by "O" rings but easily removed for zeroing or addition of fluid furnished complete with instructions.

Economy Models 451-EF and 452-AF are similar to 250 series except they are not equipped with over pressure traps. Two A324-1/4" compression fittings are included with each gage but not shown. Bodies are of 5/8" thick acrylic and scales are mirror polished, epoxy coated aluminum. See illustration.

Model No.	Range	Minor Divisions	Scale Length (inclined) (inches)	Overall Size (inches)
250-AF	.10-0-1.0"	.02"	5-1/2	8-1/2 X 4-1/8 X 1
205.5-AF	.10-0-1.0"	.01"	8	11-3/8 X 4 X 1
251-AF	.05-0-.50"	.01"	5-1/2	8-1/4 X 4 X 1
252-AF	.20-0-2.0"	.02"	8	11W1 X 6-1/2 X 1
209-AF	.20-0-3.0"	.02"	8	11-1/4 X 6-7/8 X 1
260-AF	0-1.5"	.02"	5-1/2	8-3/8 X 5-7/8 X 1
350-AF	0-.4"	.10"	4-1/2*	3 X 8-1/4 X 1
451-AF	0-1"	.01"	8	11 X 2-1/2 X 5/8
452-AF	0-2"	.02"	8	11 X 4 X 5/8

* Vertical Scale

2 PSI Maximum Working Pressure

Standard Accessories and Options

Standard accessories furnished are two static pressure tips with integral compression fittings and two five foot lengths of 1/4" aluminum tubing plus two compression fittings, mounting hardware and extra bottle of gage oil.



* Optional vent valves for easy zeroing of gages are available at extra cost. Two are required per gage.

A-MAN -709



www.airguard.com



CLARCOR Air Filtration Products

100 River Ridge Circle • Jeffersonville, IN 47130

Customer Care Team: 1-866-247-4827 • Fax: 1-800-784-3458

Email: mailbag@airguard.com • www.airguard.com

Distributed by:

© 2009 CLARCOR Air Filtration Products.

CLARCOR Air Filtration Products has a policy of continuous product research and development and reserves the right to change design and specifications without notice. Terms and Conditions of Sale can be accessed in the "LOGIN" section at www.airguard.com