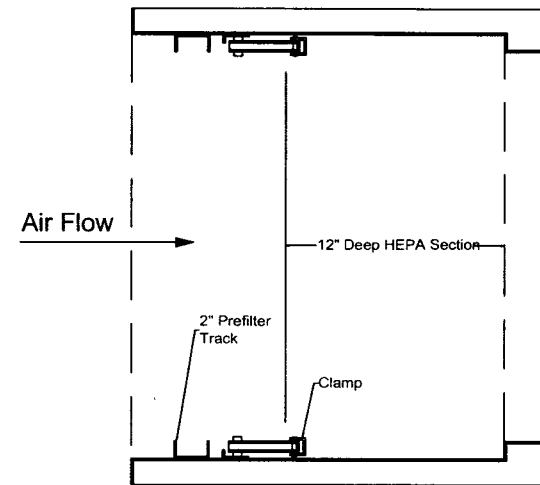
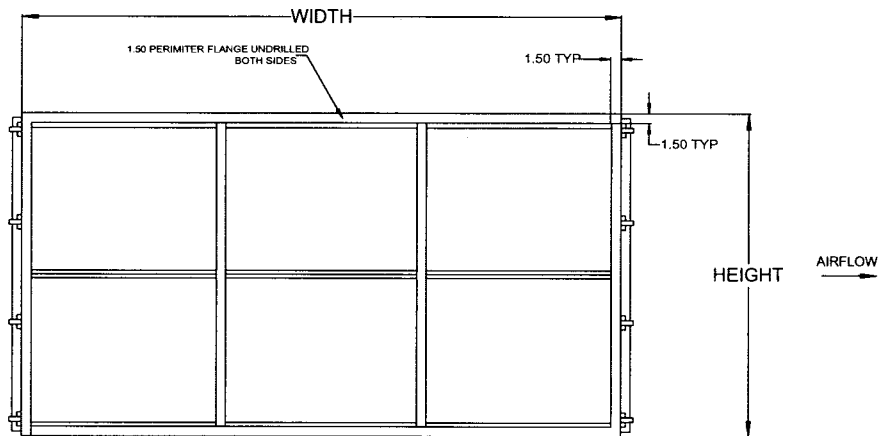


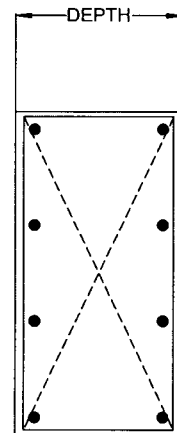
TOP VIEW



CROSS SECTION DETAIL



FRONT VIEW




SIDE VIEW

STANDARD CONSTRUCTION

1. Factory Assembled Unit. See MKT-B-00435 Page 2 Or Brochure KA-282 For Sizes And Airflow Capacity
2. 16 Gauge Aluminized Steel Construction Fasteners Are To Be Corrosion Resistant Finish
3. 1-1/2" Perimeter Mounting Flange Both Sides, Undrilled
4. Extruded Aluminum Tracks For Standard 24x24 and 12x24 Filters (1) 2" or 4" Filter Track For Prefilter (1) Final Filter Track For Either A 5-7/8" or 11-1/2" Deep HEPA See MKT-B-00435 Page 2 For Filter Information
5. Locking Mechanism Provided for HEPA Track, Using Over Center Type Clamps. Clamps Force Downstream Filter Gasket Against The Housing Sealing Grid. Mechanism Shall Provide Maintain A Sealing Pressure Of 600 FT LBS Per Filter. Standard Location of Locking Mechanism Is At Right Hand Door
6. Each Track Sealed At End With EPDM Gasket Standard Operating Temperature 200 Degrees F High Temperature Silicone Gasket Optional
7. Two Pan-Type, Crossbroke, Removable Door Panels. Doors Shall Be Sealed At Perimeter With EPDM Gasket. Doors Shall Be Bolt-On, Secured By Variable Pressure Knobs
8. Standard Design Pressure 5.0" W.G. Positive/Negative
9. Connection Hardware Provided By Others
10. See MKT-B-00435 Page 2 For Factory Available Options

NOTES

1. Completed Submittal Required At Time Of Order Use Submittal SS-261

 <p>ONE SOURCE FOR AIR FILTRATION PRODUCTS</p>	<p>P.O. Box 32578 Louisville, KY 40232 P: 502-969-2304 F: 502-961-0930</p>
	<p>CONTACT FACTORY TO VERIFY REVISION LEVEL</p>

TOLERANCES
UNLESS OTHERWISE SPECIFIED

FRACTIONAL	+0 / -1/8
DECIMAL	-
ANGLES	-

ALL DIMENSIONS IN INCHES

DRAWING NAME HEPA-LOCK SIDE ACCESS FILTER HOUSING			
APPROVED BY <i>[Signature]</i>	SPECIFICATION NO. MKT-B-00435	PAGE 1 OF 2	
SCALE NONE	DWG. SIZE A	REVISION NEW	REVISION DATE 07-21-04
<p>CONFIDENTIAL - DO NOT COPY. THIS MATERIAL IS TRADE SECRET AND PROPRIETARY BEING EXCLUSIVELY OWNED BY AIRGUARD. THE EXPRESSION OF THE INFORMATION CONTAINED HEREIN IS PROTECTED UNDER FEDERAL COPYRIGHT LAWS AND ALL COPYING IS PROHIBITED AND MAY BE SUBJECT TO CRIMINAL PENALTIES.</p>			

WIDTH CODE		01	02	03	04	05	06	07	08	
# FILTERS WIDE		1/2	1	1-1/2	2	2-1/2	3	3-1/2	4	
WIDTH (INCHES)		11-7/8	26-7/8	35-7/8	50-7/8	62-7/8	74-7/8	86-7/8	98-7/8	
HEIGHT CODE	# FILTERS HIGH	HEIGHT (INCHES)	AIRFLOW CAPACITY (CFM) AT 250 FPM FACE VELOCITY NUMBER OF HALF SIZE 12 X 24 (H) AND FULL SIZE 24 X 24 (F) USED							
			1500 3 H 0 F	3000 0 H 3 F	4500 3 H 3 F	6000 0 H 6 F	7500 3 H 6 F	8000 0 H 9 F	10500 3 H 9 F	12000 0 H 12 F
06	3	75-7/8								
05	2-1/2	63-7/8		2500 1 H 2 F	3500 3 H 2 F	5000 2 H 4 F	6000 4 H 4 F	7500 3 H 6 F	8500 5 H 6 F	10000 4 H 8 F
04	2	51-1/2	1000 2 H 0 F	2000 0 H 2 F	3000 2 H 2 F	4000 0 H 4 F	5000 2 H 4 F	6000 0 H 6 F	7000 2 H 6 F	8000 0 H 8 F
03	1-1/2	39-1/2		1500 1 H 1 F	2000 2 H 1 F	3000 2 H 2 F	3500 3 H 2 F	4500 3 H 3 F	5000 4 H 3 F	6000 4 H 4 F
02	1	27-3/16	500 1 H 0 F	1000 0 H 1 F	1500 1 H 1 F	2000 0 H 2 F	2500 1 H 2 F	3000 0 H 3 F	3500 1 H 3 F	4000 0 H 4 F
01	1/2	15-3/16		500 1 H 0 F		1000 2 H 0 F		1500 3 H 0 F		2000 4 H 0 F

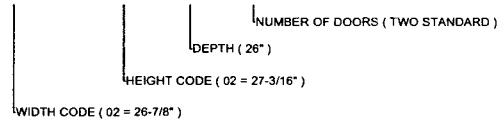
HOUSING DEPTH (INCHES)	PREFILTER DEPTH	HEPA FILTER TRACK DEPTH
26	2" OR 4"	5-7/8" OR 11-1/2"

NOTES

- "Blank" Denotes Use of 12x12 Nominal Blank-Off Plate (Included With Housing)
- Airflow Rates Based On Standard Capacity HEPA Filters. Airflow Rates Are Doubled When Using High-Capacity HEPA Filters
- All Filter Sizes Are Exact


MODEL NUMBER EXAMPLE

02 HFL 02 - 26 - 02



AVAILABLE FACTORY OPTIONS

- WEATHERPROOFING** - Housing shall be provided with a 16 GA aluminized steel pitched rain roof. All seams shall be sealed using a high viscosity, non-silicone, permanent sealant.
- DOUBLE SKIN INSULATION** - Housing shall be provided with 1" thick double wall insulation. Insulation shall be enclosed in 24 GA aluminized steel panels located on the interior of the access doors and exterior of the top and bottom panels. Insulation shall be 1.5 pound density.
- SUPPORT LEGS** - Housing shall be provided with 12 GA aluminized steel support legs. Maximum height of 6" from bottom of flange to floorline. Quantity of support legs are as follows:
02 - 04 Width Code: (2) Support Legs Each Side
05 - 07 Width Code: (3) Support Legs Each Side
08 - 10 Width Code: (4) Support Legs Each Side
- FLANGE ADAPTERS** - Housing shall be provided with 16 GA aluminized steel flat adapter flanges to match customer equipment and specifications. Flanges may be single (one side only) or double (both sides) per customer requirements.
- HANGER BRACKETS** - Housing shall be provided with 12 GA aluminized steel hanger brackets welded to the the top panel. Location may be (1) pair of brackets on either the air-entering or air-leaving side or (2) pair of brackets, (1) located on each corner. Brackets are supplied with 5/8" diameter hole for hanger rod. Hanger brackets are for support of the housing only. Other duct connections or equipment must be supported independently.
- HIGH PRESSURE** - Housing shall be provided to meet operating static pressure of 10" W.G. positive or negative. Consult factory for other high pressure applications.
- STATIC TAPS** - Housing shall be provided with static pressure fittings for 1/4" metal tube connection. Taps may be located (1) before prefilter, (2) between prefilter and final filter and (3) after final filter.
- ALTERNATE MATERIAL OF CONSTRUCTION** - Housing shall be constructed of alternate materials at customer request:
- 304 or 316 Stainless Steel
- Epoxy Coating. Coating may be exterior only, interior only or exterior/interior.
- DOP TEST PORTS** - Housing shall be provided with 3/8" half couplings with brass hex plugs. DOP ports shall be located in the housing top panel for upstream sampling.



ONE SOURCE
FOR
AIR FILTRATION
PRODUCTS

P.O. Box 32578
Louisville, KY 40232
P: 502-969-2304
F: 502-961-0930

CONTACT FACTORY TO
VERIFY REVISION LEVEL

TOLERANCES UNLESS OTHERWISE SPECIFIED

FRACTIONAL +0 / -1/8
DECIMAL -
ANGLES -

ALL DIMENSIONS IN INCHES

DRAWING NAME

HEPA-LOCK SIDE ACCESS FILTER HOUSING

APPROVED BY

K. Colman

SPECIFICATION NO.

MKT-B-00435

PAGE

2 OF 2

SCALE

NONE

DWG. SIZE

A

REVISION

NEW

REVISION DATE

07-21-04

CONFIDENTIAL - DO NOT COPY. THIS MATERIAL IS TRADE SECRET AND PROPRIETARY BEING EXCLUSIVELY OWNED BY AIRGUARD. THE EXPRESSION OF THE INFORMATION CONTAINED HEREIN IS PROTECTED UNDER FEDERAL COPYRIGHT LAWS AND ALL COPYING IS PROHIBITED AND MAY BE SUBJECT TO CRIMINAL PENALTIES.